

# CHIMNEYS & ROOF VENTS

## NATURAL VENTILATION

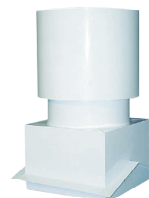
The complete line of Maxum ventilation products is made of sturdy and non-corrosive UV treated H.D.P.E. plastic. All polyethylene products are covered by a 5 year WARRANTY by the manufacturer.

### PYRAMID TOP SQUARE CHIMNEY



- Inside dimensions of 19" x 19" or 24" x 24" or 30" x 30" (483 x 483 mm or 610 x 610 mm or 762 x 762 mm)
- Bird barrier available
- Custom built according to roof slope to prevent any water flow
- Insulated and light, rigid model

### GRAVITY DAMPER ROUND CHIMNEY



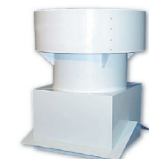
- Inside dimensions of 19" x 19" or 24" x 24" (483 x 483 mm or 610 x 610 mm)
- Gravity damper included
- Evacuate air far enough from the building
- Must be installed with a fan
- Custom built according to roof slope to prevent any water flow
- Insulated and light, rigid model

### RECTANGULAR CHIMNEY



- Inside dimensions of 19" x 30" (483 x 762 mm)
- Bird barrier available
- Custom built according to roof slope to prevent any water flow
- Insulated and light, rigid model

### ROUND ROOF VENT



- Inside dimensions of 19" x 19" (483 x 483 mm)
- Bird barrier available
- Allows to ventilate the attic
- Custom built according to roof slope to prevent any water flow
- Insulated and light, rigid model
- Available in square and round size

### LINEAR ROOF VENT



- Inside dimensions of 8" x 48" (203 x 1220 mm) or 8" x 96" (203 x 2448 mm)
- Standard roof slope included
- Allows to ventilate the attic
- Ventilates 1000 sq. feet (100 m2) or 2000 sq. feet (200 m2)
- Insulated and light, rigid model

### SQUARE DUCT



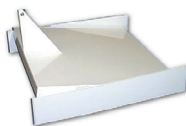
- Inside dimensions of 19" x 19" or 24" x 24" or 30" x 30" or 19" x 30" (483 x 483 mm or 610 x 610 mm or 762 x 762 mm or 483 x 762 mm)
- Delivered unassembled for freight savings
- Insulated and light, rigid model

### ROUND DUCT



- Inside diameter of 19" or 24" (483 mm or 610 mm)
- Delivered unassembled for freight savings
- Insulated and light, rigid model

### DAMPER



- Inside dimensions of 19" x 19" or 24" x 24" or 30" x 30" or 19" x 30" (483 x 483 mm or 610 x 610 mm or 762 x 762 mm or 483 x 762 mm)
- Insulated and light, rigid model
- Can be installed in the top or bottom
- Automatic or manual adjustment control

maxumtech.com



**Maxum Technologies Inc.**

4050, blvd Casavant West • St-Hyacinthe (Quebec) Canada • J2S 8E3  
P. 1 450 771.2540 • F. 1 450 771.5779 • [info@maxumtech.com](mailto:info@maxumtech.com)

Distributed by: